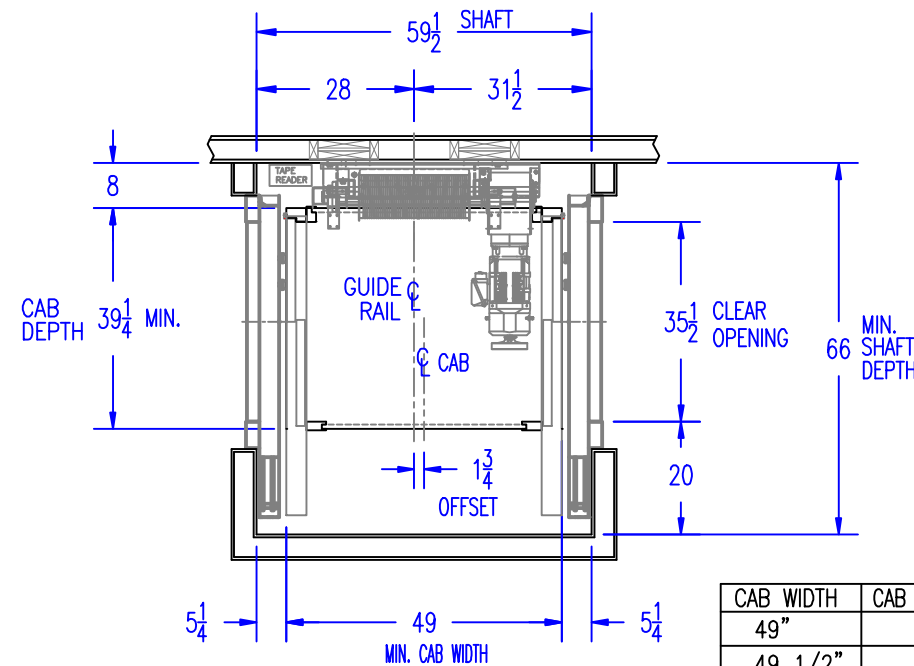


REVISIONS				
REV	DATE	ECN	DESCRIPTION OF CHANGE	BY
C	3/16/21	1003	New Drawing showing details per Spreadsheet (P/N 25211791). Revised Minimum Car/Shaft Sizes W/ Offset Car dimension as needed.	BWW
D	9/8/21	1008	Added Dwg's -4 & -5 for Landing Entrance Minimum Height requirements	BWW

TABLE 5

MINIMUM OVERHEAD REQUIRED		GATE CODE						
DOOR DESCRIPTION		1	2	3	4	5	6	3 & 6
1	36 x 96 2SP	10'-1"	10'-1"	10'-1"			10'-1"	10'-5"
2	36 x 84 2SP	9'-1"	9'-1"	9'-1"			9'-1"	9'-5"
3	36 x 80 2SP	8'-9"	8'-9"	8'-9"			8'-9"	9'-1"

④



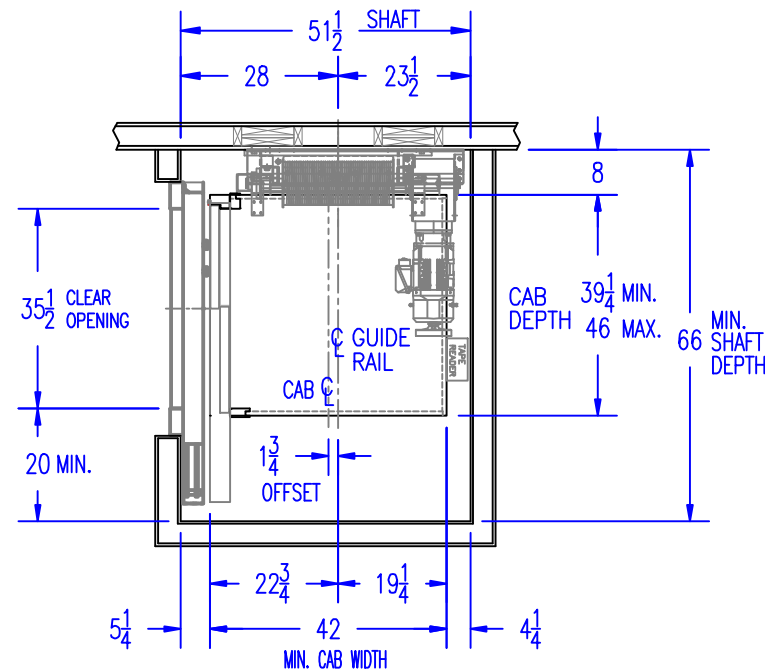
CAB WIDTH	CAB OFFSET REQUIRED
49"	1 3/4"
49 1/2"	1 1/2"
50"	1 1/4"
50 1/2"	1"
51"	3/4"
51 1/2"	1/2"
52"	1/4"
52 1/2"	0

2 SPEED / CODE 3 & 6

NOTE:

- FOR THE OHCD ELEVATOR W/SUMITOMO GEARMOTOR ALONG WITH 2-SPEED VICTORY DOOR ENTRANCES AND OPERATOR.
- DRAWINGS SHOW THE MINIMUM CAR/SHAFT DEPTH AND WIDTH ALLOWED BASED ON GATE CODE.
- WITH SMALLER SHAFTS, THE CAB MAY NEED TO BE OFFSET ON THE PLATFORM FRAME. THE AMOUNT OF OFFSET, AT THE SHAFT MIN. WIDTH, IS SHOWN ON THE DRAWING. THE TABLES SHOW THE CAB OFFSET VERSUS CAB WIDTH IN 1/2" INCREMENTS.
- SEE TABLE 5 FOR MINIMUM OVERHEAD BASED ON DOOR HEIGHT & GATE CODE.
- GATE CODES 4 & 5 ARE NOT AVAILABLE WITH 2 SPEED SLIDING DOORS DUE TO THE 20" SPACE NEEDED FOR DOORS IN OPENED POSITION AND CAB DEPTH NECESSARY TO MEET THE 35-1/2" CLEAR OPENING.
- A MAXIMUM OF TWO (2) SETS OF DOORS MAY BE INSTALLED ON A OHCD AS LONG AS THEY ARE ACROSS FROM ONE ANOTHER.

①

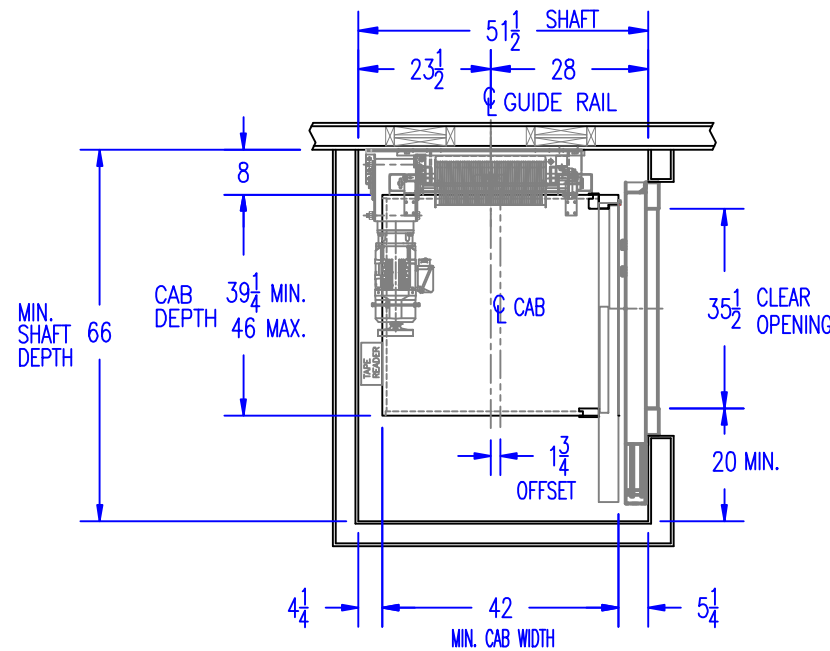


2 SPEED / CODE 6

CAB WIDTH	CAB OFFSET REQUIRED
42"	1 3/4"
42 1/2"	1 1/2"
43"	1 1/4"
43 1/2"	1"
44"	3/4"
44 1/2"	1/2"
45"	1/4"
45 1/2"	0

SEE NOTE 5

②

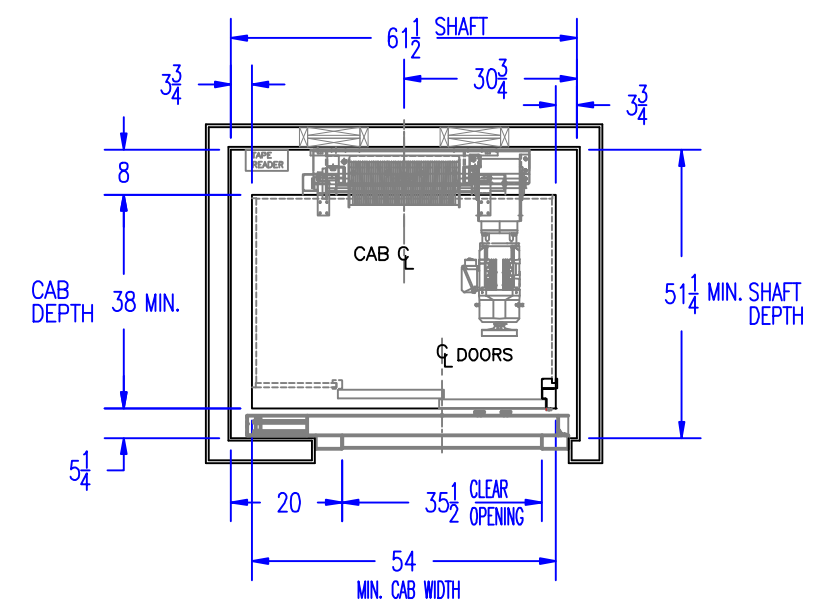


2 SPEED / CODE 3

CAB WIDTH	CAB OFFSET REQUIRED
42"	1 3/4"
42 1/2"	1 1/2"
43"	1 1/4"
43 1/2"	1"
44"	3/4"
44 1/2"	1/2"
45"	1/4"
45 1/2"	0

SEE NOTE 5

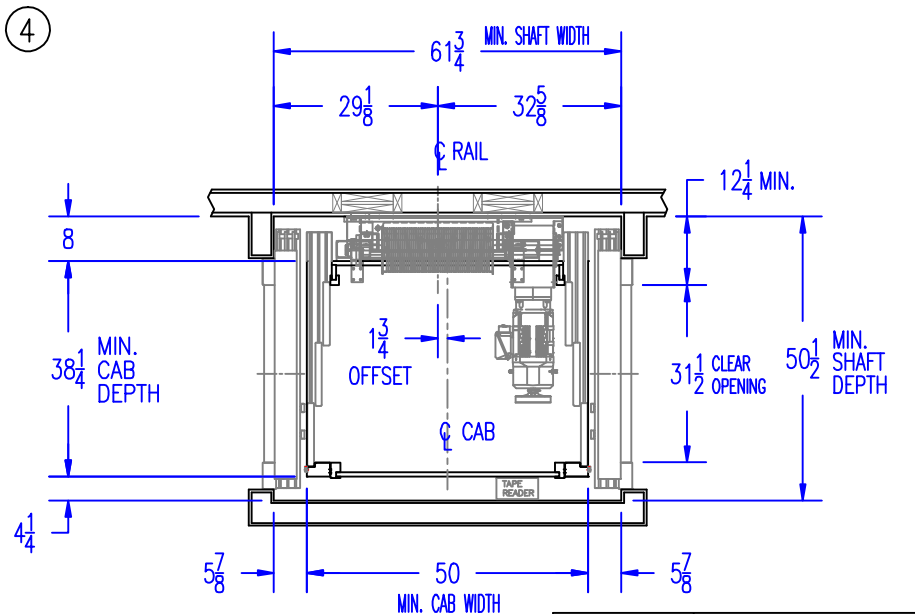
③



2 SPEED / CODE 1 or 2

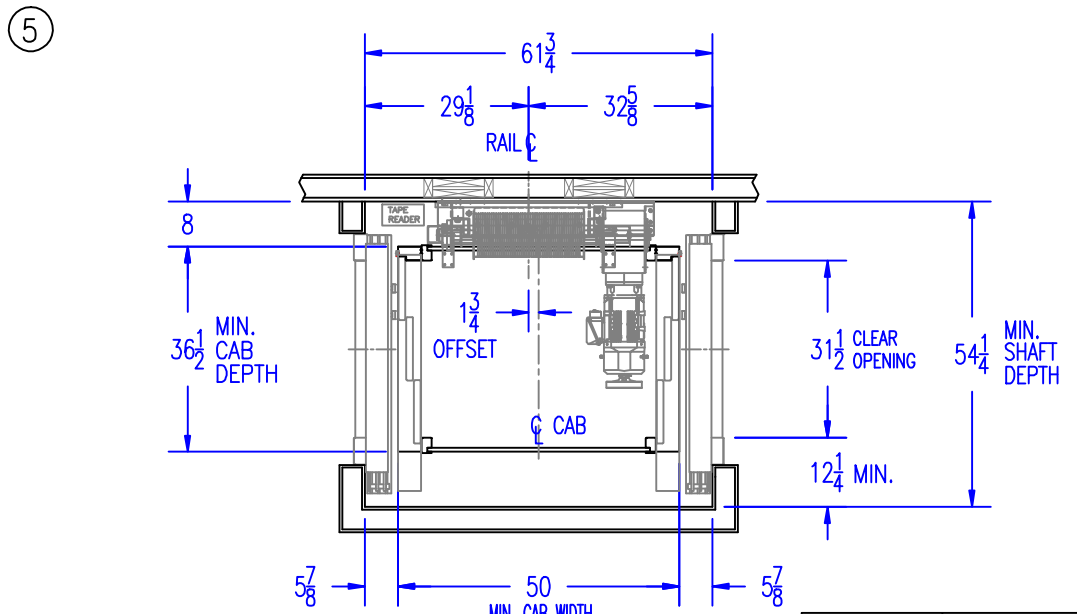
CODE 2 SHOWN
CODE 1 SYM. OPP.

MATERIAL SPEC.		PART NUMBER	
		DRAWING TITLE 2 SPEED DOORS MINIMUM SHAFT & CAB DIMENSIONS CAB & HOISTWAY W/ VICTORY DOORS OHCD ELEVATOR W/SUMITOMO DRIVE	
DRAWN BWW		CHECKED	DESIGNED
APPROVED		INITIAL ECN	DWG. SCALE NONE
DWG. DATE 3/16/2021		DRAWING NO. 25211791-1	
REV. LEVEL D			



CAB WIDTH	CAB OFFSET REQUIRED
50"	1 3/4"
50 1/2"	1 1/2"
51"	1 1/4"
51 1/2"	1"
52"	3/4"
52 1/2"	1/2"
53"	1/4"
53 1/2"	0

32 x 80 3SP / CODE 4 & 5



CAB WIDTH	CAB OFFSET REQUIRED
50"	1 3/4"
50 1/2"	1 1/2"
51"	1 1/4"
51 1/2"	1"
52"	3/4"
52 1/2"	1/2"
53"	1/4"
53 1/2"	0

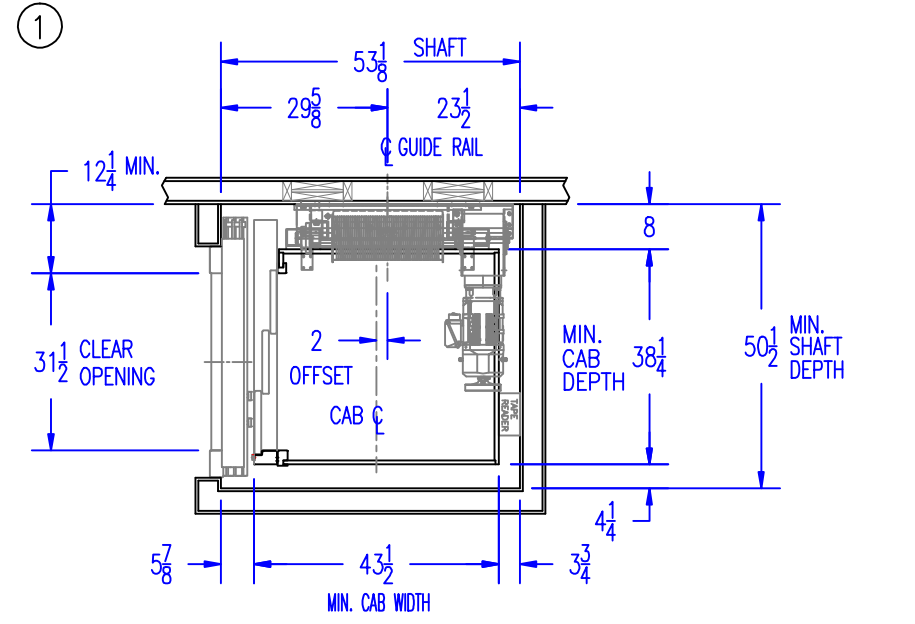
32 x 80 3SP / CODE 3 & 6

REVISIONS				
REV	DATE	ECN	DESCRIPTION OF CHANGE	BY
C	3/16/21	1003	New Drawing showing details per Spreadsheet (P/N 25211791). Revised Minimum Car/Shaft Sizes W/ Offset Car dimension as needed.	BWW
D	9/8/21	1008	Added Dwg's -4 & -5 for Landing Entrance Minimum Height requirements	BWW

NOTE:

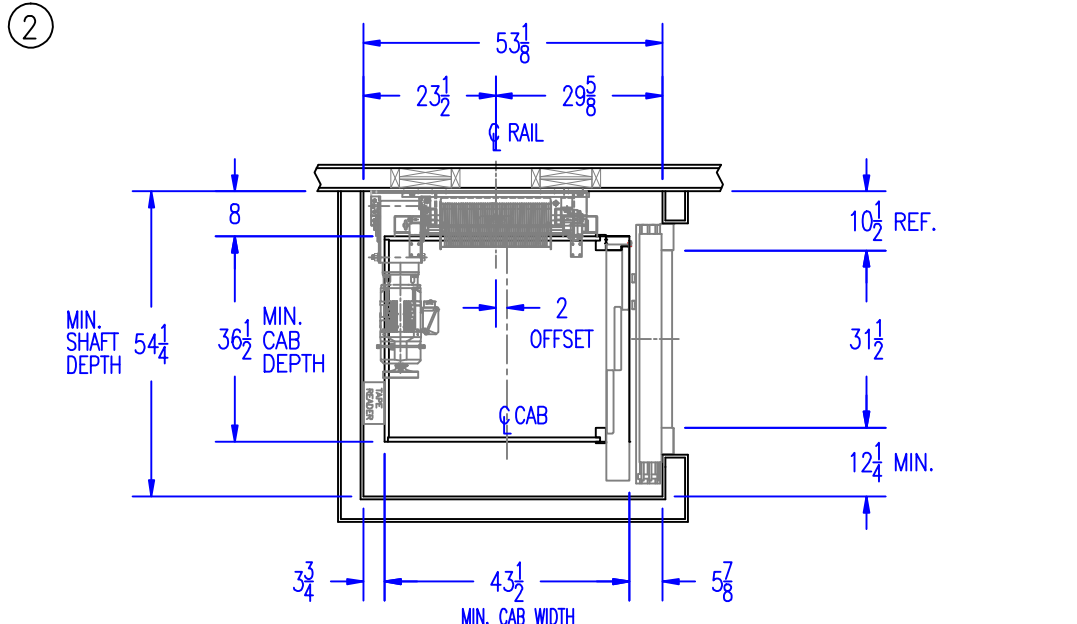
- FOR THE OHCD ELEVATOR W/SUMITOMO GEARMOTOR ALONG WITH 32 x 80 3-SPEED VICTORY DOOR ENTRANCES AND OPERATOR.
- DRAWINGS SHOW THE MINIMUM CAR/SHAFT DEPTH AND WIDTH ALLOWED BASED ON GATE CODE.
- WITH SMALLER SHAFTS, THE CAB MAY NEED TO BE OFFSET ON THE PLATFORM FRAME. THE AMOUNT OF OFFSET, AT THE SHAFT MIN. WIDTH, IS SHOWN ON THE DRAWING. THE TABLES SHOW THE CAB OFFSET VERSUS CAB WIDTH IN 1/2" INCREMENTS.
- SEE TABLE BELOW FOR MINIMUM OVERHEAD BASED ON GATE CODE.
- A MAXIMUM OF TWO (2) SETS OF DOORS MAY BE INSTALLED ON A OHCD AS LONG AS THEY ARE ACROSS FROM ONE ANOTHER.

		MINIMUM OVERHEAD REQUIRED								
		GATE CODE								
DOOR DESCRIPTION		1	2	3	4	5	6	3 & 6	4 & 5	
1	32 x 80 3SP	9'-0"	9'-0"	9'-0"	9'-0"	9'-0"	9'-0"	9'-1"	9'-1"	



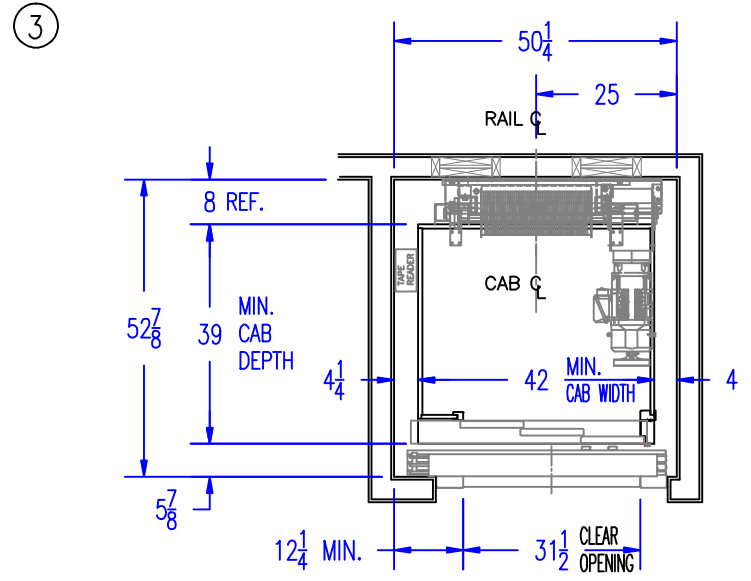
CAB WIDTH	CAB OFFSET REQUIRED
43 1/2"	2"
44"	1 3/4"
44 1/2"	1 1/2"
45"	1 1/4"
45 1/2"	1"
46"	3/4"
46 1/2"	1/2"
47"	1/4"
47 1/2"	0

32 x 80 3SP / CODE 5 SHOWN
32 x 80 3SP / CODE 4 SYM. OPP.



CAB WIDTH	CAB OFFSET REQUIRED
43 1/2"	2"
44"	1 3/4"
44 1/2"	1 1/2"
45"	1 1/4"
45 1/2"	1"
46"	3/4"
46 1/2"	1/2"
47"	1/4"
47 1/2"	0

32 x 80 3SP / CODE 3 SHOWN
32 x 80 3SP / CODE 6 SYM. OPP.

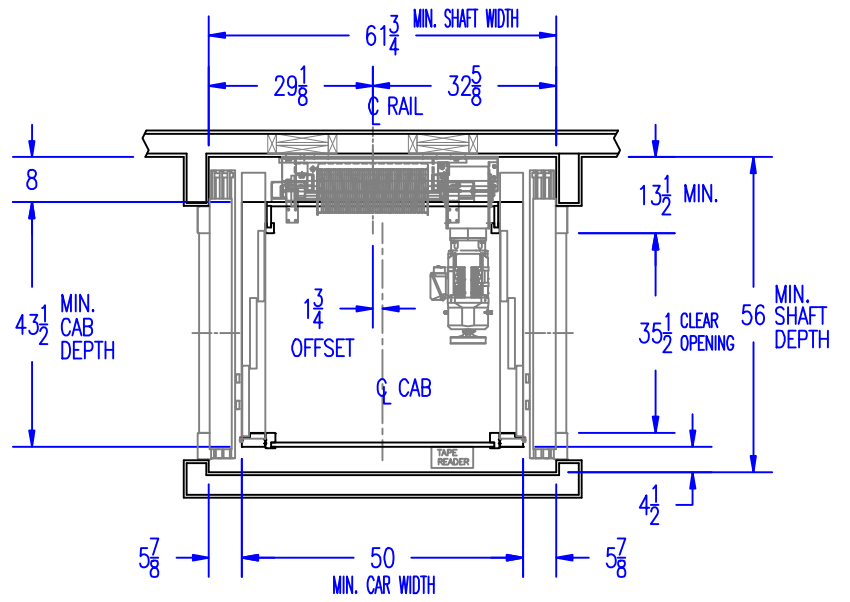


32 x 80 3SP / CODE 1 or 2

CODE 2 SHOWN
CODE 1 SYM. OPP.

MATERIAL SPEC.			PART NUMBER		
			DRAWING TITLE		
			32 X 80 3 SPEED DOORS MINIMUM SHAFT & CAB DIMENSIONS CAB & HOISTWAY W/VICTORY DOORS OHCD ELEVATOR W/SUMITOMO DRIVE		
DRAWN BWW	CHECKED	DESIGNED	APPROVED	INITIAL ECN	DWG. SCALE NONE
			DWG. DATE 3/15/2021	DRAWING NO. 25211791-2	
			REV. LEVEL D		

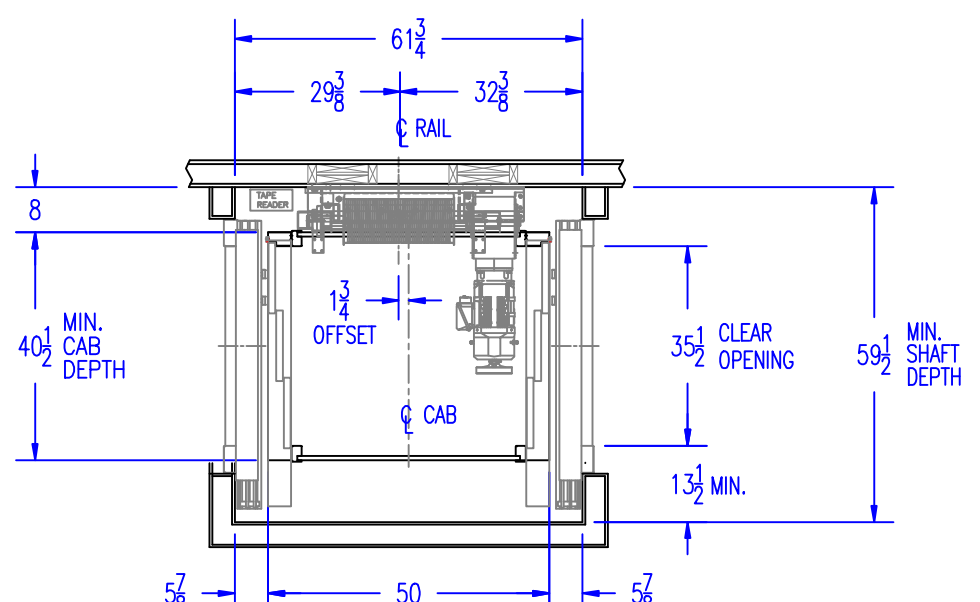
4



CAB WIDTH	CAB OFFSET REQUIRED
50"	1 3/4"
50 1/2"	1 1/2"
51"	1 1/4"
51 1/2"	1"
52"	3/4"
52 1/2"	1/2"
53"	1/4"
53 1/2"	0

36 x 80 3SP / CODE 4 & 5

5



CAB WIDTH	CAB OFFSET REQUIRED
50"	1 3/4"
50 1/2"	1 1/2"
51"	1 1/4"
51 1/2"	1"
52"	3/4"
52 1/2"	1/2"
53"	1/4"
53 1/2"	0

36 x 80 3SP / CODE 3 & 6

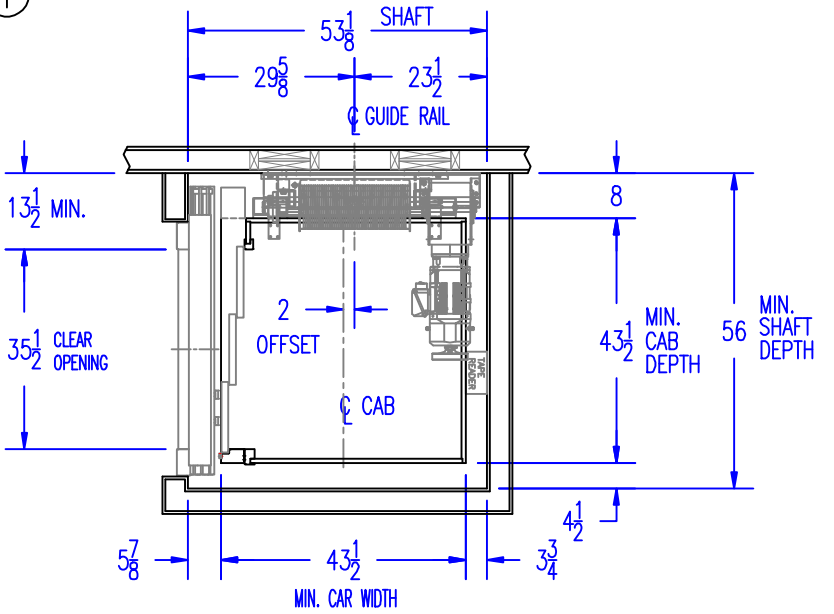
REVISIONS				
REV	DATE	ECN	DESCRIPTION OF CHANGE	BY
C	3/16/21	1003	New Drawing showing details per Spreadsheet (P/N 25211791). Revised Minimum Car/Shaft Sizes W/ Offset Car dimension as needed.	BWW
D	9/8/21	1008	Added Dwg's -4 & -5 for Landing Entrance Minimum Height requirements	BWW

NOTE:

- FOR THE OHCD ELEVATOR W/SUMITOMO GEARMOTOR ALONG WITH 36 x 80 3-SPEED VICTORY DOOR ENTRANCES AND OPERATOR.
- DRAWINGS SHOW THE MINIMUM CAR/SHAFT DEPTH AND WIDTH ALLOWED BASED ON GATE CODE.
- WITH SMALLER SHAFTS, THE CAB MAY NEED TO BE OFFSET ON THE PLATFORM FRAME. THE AMOUNT OF OFFSET, AT THE SHAFT MIN. WIDTH, IS SHOWN ON THE DRAWING. THE TABLES SHOW THE CAB OFFSET VERSUS CAB WIDTH IN 1/2" INCREMENTS.
- SEE TABLE BELOW FOR MINIMUM OVERHEAD BASED ON GATE CODE.
- A MAXIMUM OF TWO (2) SETS OF DOORS MAY BE INSTALLED ON A OHCD AS LONG AS THEY ARE ACROSS FROM ONE ANOTHER.

		MINIMUM OVERHEAD REQUIRED								
		GATE CODE								
DOOR DESCRIPTION		1	2	3	4	5	6	3 & 6	4 & 5	
1	36 x 80 3SP	9'-0"	9'-0"	9'-0"	9'-0"	9'-0"	9'-0"	9'-1"	9'-1"	

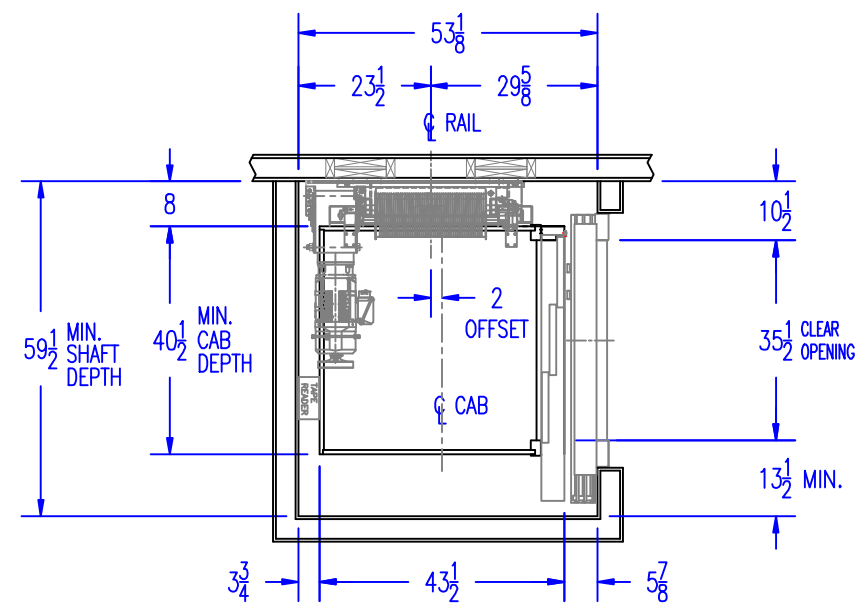
1



CAB WIDTH	CAB OFFSET REQUIRED
43 1/2"	2"
44"	1 3/4"
44 1/2"	1 1/2"
45"	1 1/4"
45 1/2"	1"
46"	3/4"
46 1/2"	1/2"
47"	1/4"
47 1/2"	0

36 x 80 3SP / CODE 5 SHOWN
36 x 80 3SP / CODE 4 SYM. OPP.

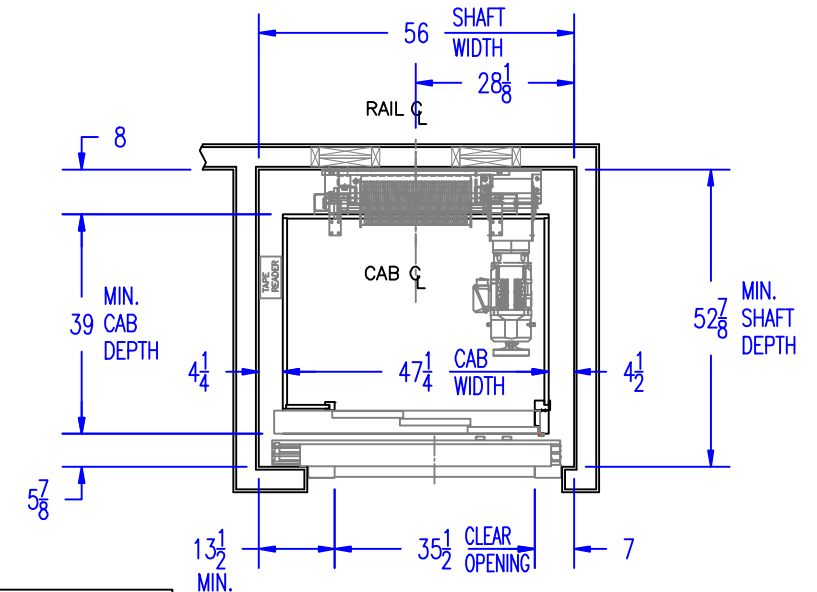
2



CAB WIDTH	CAB OFFSET REQUIRED
43 1/2"	2"
44"	1 3/4"
44 1/2"	1 1/2"
45"	1 1/4"
45 1/2"	1"
46"	3/4"
46 1/2"	1/2"
47"	1/4"
47 1/2"	0

36 x 80 3SP / CODE 3 SHOWN
36 x 80 3SP / CODE 6 SYM. OPP.

3



36 x 80 3SP / CODE 1 or 2

CODE 2 SHOWN
CODE 1 SYM. OPP.

MATERIAL SPEC.		PART NUMBER	
			DWG. DATE 3/15/2021
DRAWING TITLE 36 X 80 3 SPEED DOORS MINIMUM SHAFT & CAB DIMENSIONS CAB & HOISTWAY W/VICTORY DOORS OHCD ELEVATOR W/SUMITOMO DRIVE			DRAWING NO. 25211791-3
DRAWN BWW	CHECKED	DESIGNED	APPROVED
INITIAL ECN		DWG. SCALE NONE	REV. LEVEL D

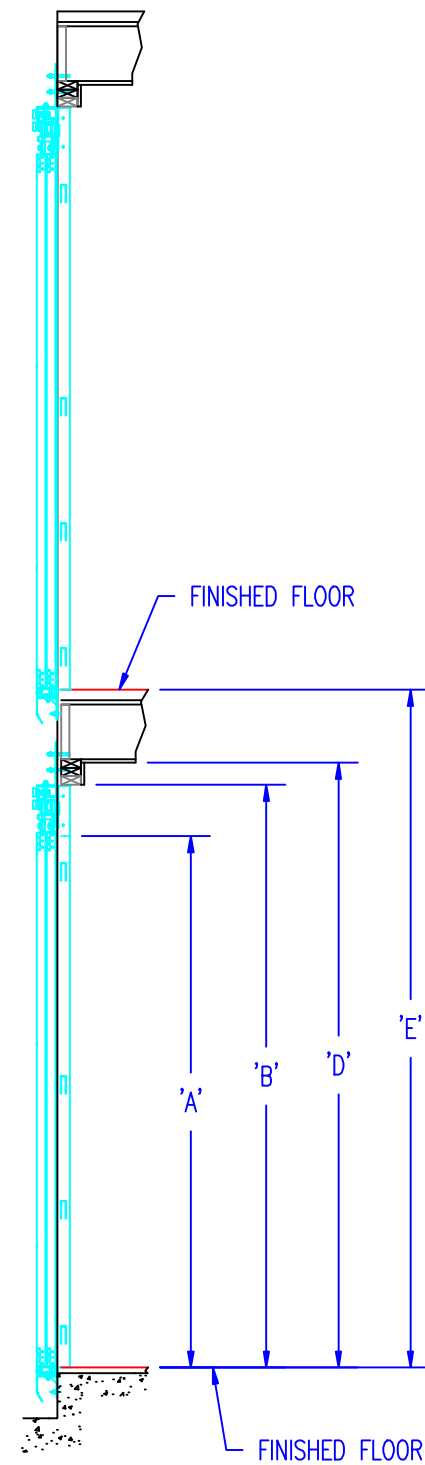
REVISIONS					
REV	DATE	ECN	DESCRIPTION OF CHANGE	BY	
C	3/16/21	1003	New Drawing showing details per Spreadsheet (P/N 25211791). Revised Minimum Car/Shaft Sizes W/ Offset Car dimension as needed.	BWW	
D	9/8/21	1008	Added Dwg's -4 & -5 for Landing Entrance Minimum Height requirements	BWW	

NOTE:

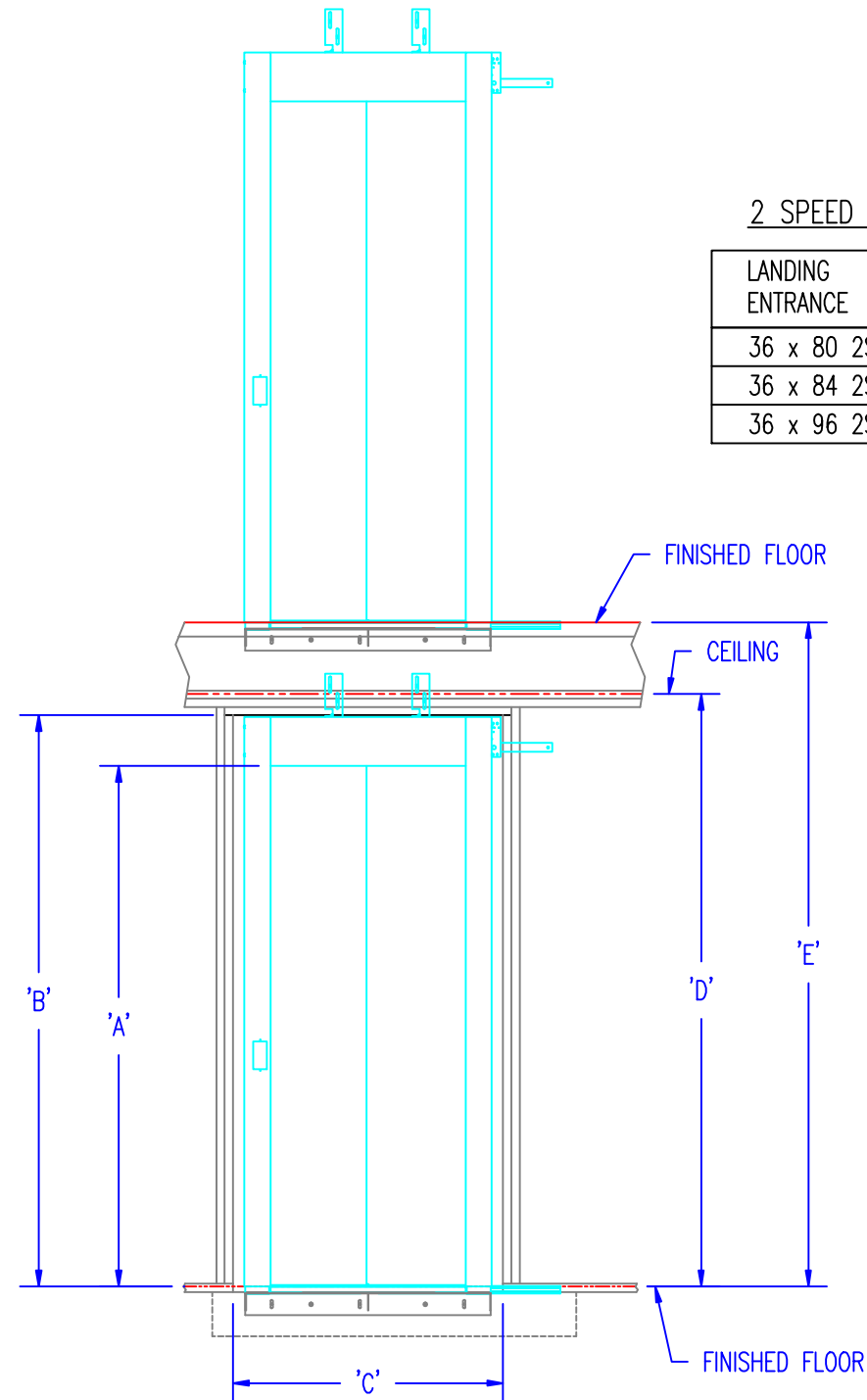
- THIS DRAWING SHOWS THE MINIMUM CEILING HEIGHT AND FLOOR TO FLOOR DISTANCE REQUIRED FOR THE VICTORY 2-SPEED LANDING ENTRANCES.

2 SPEED LANDING ENTRANCES

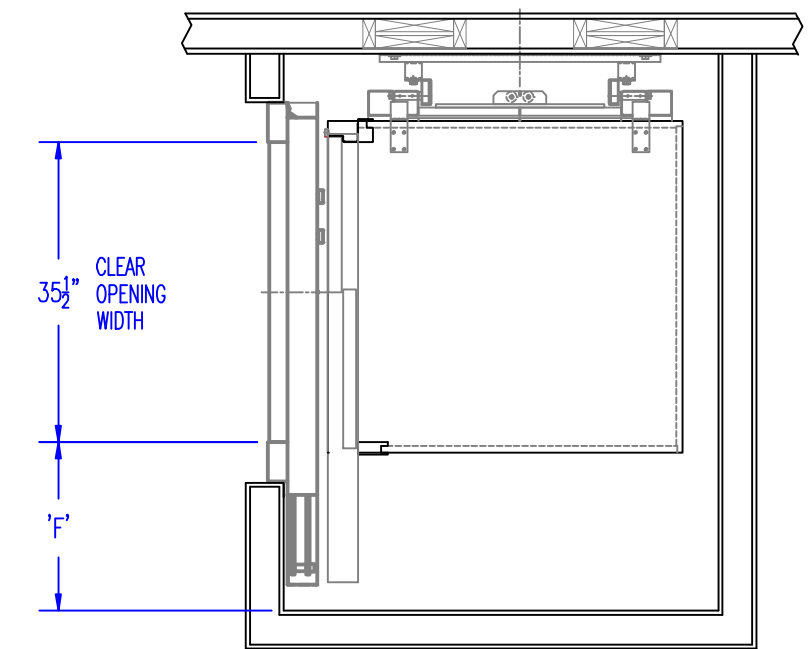
LANDING ENTRANCE	'A' CLEAR OPENING HT.	'B' MIN. R.O. HEIGHT	'C' R.O. WIDTH	'D' MIN. CEILING HT.	'E' MIN. FLR.-FLR. DIST.	'F' MIN. RETURN DIST.
36 x 80 2SP	78 ³ / ₄ "	88 ¹ / ₈ "	48 ³ / ₄ "	7'-8"	8'-9"	20"
36 x 84 2SP	82 ⁵ / ₈ "	92"	48 ³ / ₄ "	8'-0"	9'-1"	20"
36 x 96 2SP	94 ¹ / ₂ "	104"	48 ³ / ₄ "	9'-0"	10'-1"	20"



LANDING ENTRANCE
SIDE ELEVATION VIEW



LANDING ENTRANCE
FRONT ELEVATION VIEW



PLAN VIEW (NTS)

MATERIAL SPEC.			PART NUMBER			
INCLINATOR COMPANY OF AMERICA HARRISBURG, PA			DRAWING TITLE		DWG. DATE	
			2 SPEED ENTRANCES MINIMUM CEILING HT. & FLR-FLR DIST. OHCD ELEVATOR W/SUMITOMO DRIVE		9/8/2021	
					DRAWING NO.	
					25211791-4	
DRAWN	CHECKED	DESIGNED	APPROVED	INITIAL ECN	DWG. SCALE	REV. LEVEL
BWW					NONE	D

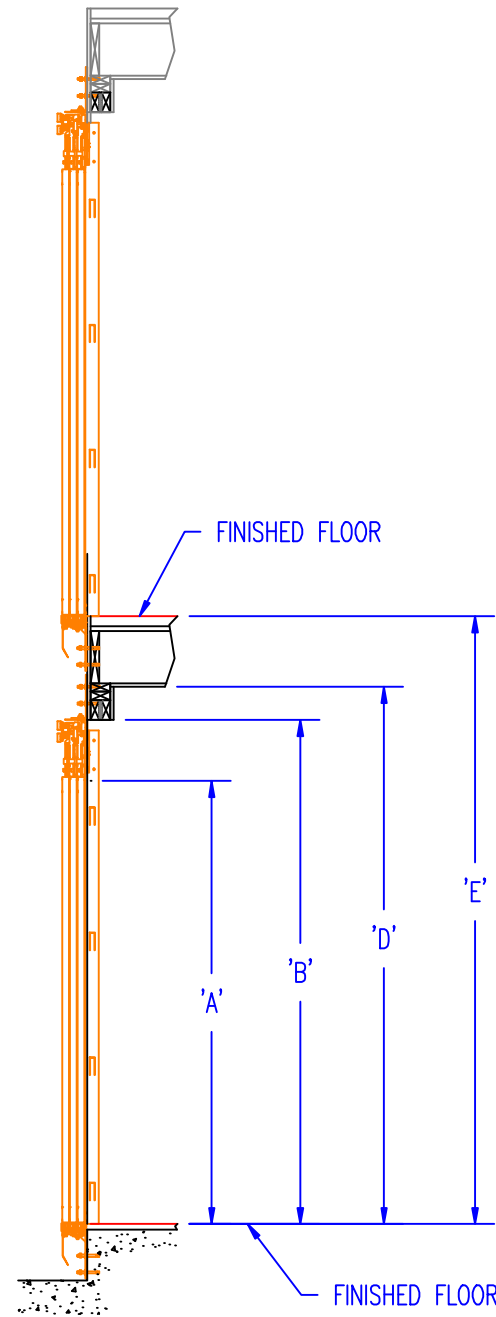
3 SPEED LANDING ENTRANCES

LANDING ENTRANCE	'A' CLEAR OPENING HT.	'B' MIN. R.O. HEIGHT	'C' R.O. WIDTH	'D' MIN. CEILING HT.	'E' MIN. FLR.-FLR. DIST.	'F' CLR. OPENING WIDTH	'G' MIN. RETURN DIST.
36 x 80 3SP	78 $\frac{3}{4}$ "	89 $\frac{5}{8}$ "	48 $\frac{3}{4}$ "	8'-0"	9'-0"	35 $\frac{1}{2}$ "	13 $\frac{1}{2}$ "
32 x 80 3SP	78 $\frac{3}{4}$ "	89 $\frac{5}{8}$ "	44 $\frac{3}{4}$ "	8'-0"	9'-0"	31 $\frac{1}{2}$ "	12 $\frac{1}{4}$ "

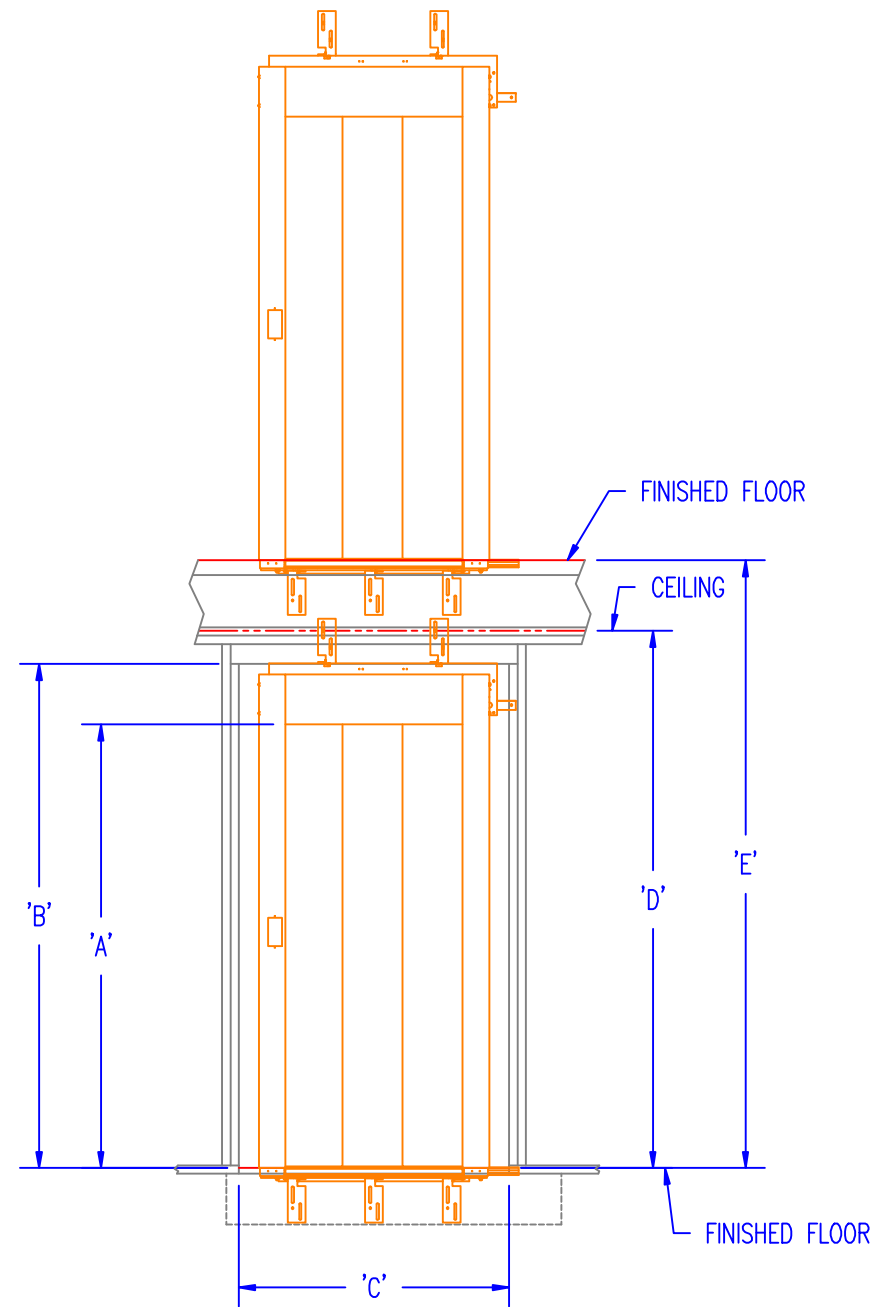
REVISIONS				
REV	DATE	ECN	DESCRIPTION OF CHANGE	BY
C	3/16/21	1003	New Drawing showing details per Spreadsheet (P/N 25211791). Revised Minimum Car/Shaft Sizes W/ Offset Car dimension as needed.	BWW
D	9/8/21	1008	Added Dwg's -4 & -5 for Landing Entrance Minimum Height requirements	BWW

NOTE:

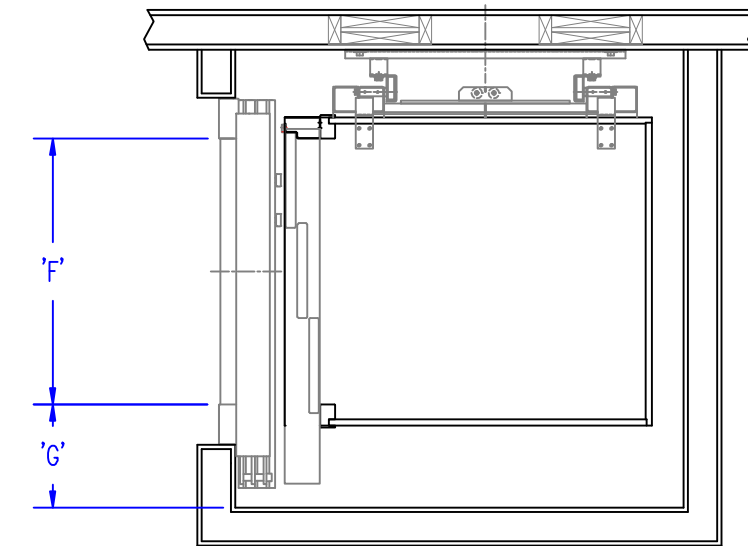
- THIS DRAWING SHOWS THE MINIMUM CEILING HEIGHT AND FLOOR TO FLOOR DISTANCE REQUIRED FOR THE VICTORY 3-SPEED LANDING ENTRANCES.



LANDING ENTRANCE
SIDE ELEVATION VIEW



LANDING ENTRANCE
FRONT ELEVATION VIEW



PLAN VIEW (NTS)

MATERIAL SPEC.		PART NUMBER	
 HARRISBURG, PA		DWG. DATE	9/8/2021
		DRAWING NO.	25211791-5
DRAWN	CHECKED	DESIGNED	APPROVED
BWW			
INITIAL ECN	DWG. SCALE	REV. LEVEL	
	NONE	D	